

NOTES: 1. A one-foot reserve dedicated to the public in fee as a buffer separation between the side or end of streets in subdivision plans where such streets abut adjacent acreage tracts. The condition of such dedication being that when the adjacent property is subdivided in a recorded plat the one-foot reserve shall thereupon become vested in the public for street right-of-way purposes (and the fee title thereto shall revert to and vest in the dedicant, his heirs, assigns or successors). 2. All utility, water line and storm sewer easements shown extend 5' on either side of a common lot line unless otherwise indicated.

# MEMORIAL GLEN SECTION 1

A SUBDIVISION OF 14.86 ACRES IN THE CHRISTIANA WILLIAMS SURVEY A-834, HARRIS COUNTY, TEXAS.

FIRST MEMORIAL GLEN CORPORATION  
SECOND MEMORIAL GLEN CORPORATION  
THIRD MEMORIAL GLEN CORPORATION

JOSEPH J. JOHNSON, PRESIDENT  
PAUL A. LEDERER  
CIVIL ENGINEER - LAND SURVEYOR  
HOUSTON, TEXAS

SCALE 1" = 100' DATE JAN. 1961  
SCALE 1" = 100'  
51 LOTS 3 BLOCKS

STATE OF TEXAS  
COUNTY OF HARRIS  
I, JOSEPH J. JOHNSON and ROBERT L. BUCK, President and Secretary respectively of FIRST MEMORIAL GLEN CORPORATION, SECOND MEMORIAL GLEN CORPORATION and THIRD MEMORIAL GLEN CORPORATION, owners of the property subdivided in the above and foregoing map of MEMORIAL GLEN, SECTION 1, do hereby make subdivision of said property for and on behalf of said FIRST MEMORIAL GLEN CORPORATION, SECOND MEMORIAL GLEN CORPORATION and THIRD MEMORIAL GLEN CORPORATION, according to the lines, lots, building lines, streets, alleys, parks and easements thereon shown and designate said subdivision as MEMORIAL GLEN SECTION 1, located in the CHRISTIANA WILLIAMS SURVEY A-834, HARRIS COUNTY, TEXAS, and on behalf of said FIRST MEMORIAL GLEN CORPORATION, SECOND MEMORIAL GLEN CORPORATION and THIRD MEMORIAL GLEN CORPORATION, dedicate to the public use, as such, all of the streets, alleys, parks and easements shown hereon forever and do hereby waive any claims for damages occasioned by the establishing of grades as approved for the streets and alleys dedicated, or occasioned by the alteration of the surface of any portion of the streets or alleys to conform to such grades and do hereby bind ourselves, our successors and assigns to warrant and forever defend the title to the land so dedicated.  
2. We, PAT O'NEIL, NORMAN W. O'NEIL and THE FIRST-WICHITA NATIONAL BANK OF WICHITA FALLS, TEXAS, TRUSTEE, owners and holders of an undivided 1/2 interest in the above and foregoing map of MEMORIAL GLEN, SECTION 1, do hereby make subdivision of said property for and on behalf of said FIRST MEMORIAL GLEN CORPORATION, SECOND MEMORIAL GLEN CORPORATION and THIRD MEMORIAL GLEN CORPORATION, according to the lines, lots, building lines, streets, alleys, parks and easements thereon shown and designate said subdivision as MEMORIAL GLEN SECTION 1, located in the CHRISTIANA WILLIAMS SURVEY A-834, HARRIS COUNTY, TEXAS, and on behalf of said FIRST MEMORIAL GLEN CORPORATION, SECOND MEMORIAL GLEN CORPORATION and THIRD MEMORIAL GLEN CORPORATION, dedicate to the public use, as such, all of the streets, alleys, parks and easements shown hereon forever and do hereby waive any claims for damages occasioned by the establishing of grades as approved for the streets and alleys dedicated, or occasioned by the alteration of the surface of any portion of the streets or alleys to conform to such grades and do hereby bind ourselves, our successors and assigns to warrant and forever defend the title to the land so dedicated.  
3. There is also dedicated for utilities an unobstructed aerial easement five (5) feet wide from a plane twenty (20) feet above the ground upward located adjacent to all easements shown hereon.  
4. We hereby covenant and agree with the City of Houston and/or Harris County and/or any property owner that utility easements shown on acreage are hereby established as shown.  
5. We hereby covenant and agree that all lots within the boundaries of this subdivision are for residential purposes unless otherwise noted.  
6. IN TESTIMONY WHEREOF, the FIRST MEMORIAL GLEN CORPORATION, SECOND MEMORIAL GLEN CORPORATION and THIRD MEMORIAL GLEN CORPORATION, have caused these presents to be signed by JOSEPH J. JOHNSON, its President, thereunto authorized, attested by its Secretary, ROBERT L. BUCK, and its common seal hereunto affixed this 11 day of MARCH, 1961.

LIENHOLDERS  
FIRST MEMORIAL GLEN CORPORATION - SECOND MEMORIAL GLEN CORPORATION - THIRD MEMORIAL GLEN CORPORATION  
By Joseph J. Johnson  
John C. Harris, Jr. Agent and Attorney-in-Fact for Pat O'Neil, Norman W. O'Neil and The First-Wichita National Bank, Wichita Falls, Texas, Trustee  
Attest: Robert L. Buck  
Robert L. Buck, Secretary

STATE OF TEXAS  
COUNTY OF HARRIS  
Before me, the undersigned authority, on this day personally appeared JOSEPH J. JOHNSON, President and ROBERT L. BUCK, Secretary of the FIRST MEMORIAL GLEN CORPORATION, SECOND MEMORIAL GLEN CORPORATION and THIRD MEMORIAL GLEN CORPORATION, known to me to be the persons whose names are subscribed to the foregoing instrument, and acknowledged to me that they executed the same for the purposes and consideration therein expressed, and in the capacity therein and herein set out, and as the act and deed of said corporations.  
Given under my hand and seal of office, this 11 day of MARCH, 1961.

Paul A. Lederer  
Notary Public in and for Harris County, Texas.  
My Comm. Expires 12-31-1961  
My Comm. No. 11111

STATE OF TEXAS  
COUNTY OF HARRIS  
Before me, the undersigned authority, on this day personally appeared, JOHN C. HARRIS, JR., Agent and Attorney-in-Fact for PAT O'NEIL, NORMAN W. O'NEIL and THE FIRST-WICHITA NATIONAL BANK OF WICHITA FALLS, TEXAS, TRUSTEE, known to me to be the person whose name is subscribed to the foregoing instrument and acknowledged to me that he executed the same for the purposes and consideration therein expressed and in the capacity therein and herein set out.  
Given under my hand and seal of office, this 11 day of MARCH, 1961.

Paul A. Lederer  
Notary Public in and for Harris County, Texas.  
My Comm. Expires 12-31-1961  
My Comm. No. 11111

This is to certify that I, PAUL A. LEDERER, a Registered Civil Engineer of the State of Texas, have plotted the above subdivision from an actual survey on the ground and that all block corners, angle points, and points of curve are properly marked with iron pipes (1-1/4" Gal. Iron Pipes), and that this plat correctly represents that survey made by me.

Paul A. Lederer  
Paul A. Lederer, Reg. No. 7181

CITY OF HOUSTON  
COUNTY OF HARRIS  
This is to certify, that the City Planning Commission of the City of Houston, Texas, has approved this plat and subdivision of MEMORIAL GLEN, SECTION 1, as shown hereon.  
IN TESTIMONY WHEREOF, witness the official signature of the Chairman and Secretary of the City Planning Commission of the City of Houston, Texas, this 28th day of February, 1961.

Ralph S. Ellifant  
Secretary - Engineer  
M. Edwards  
Chairman

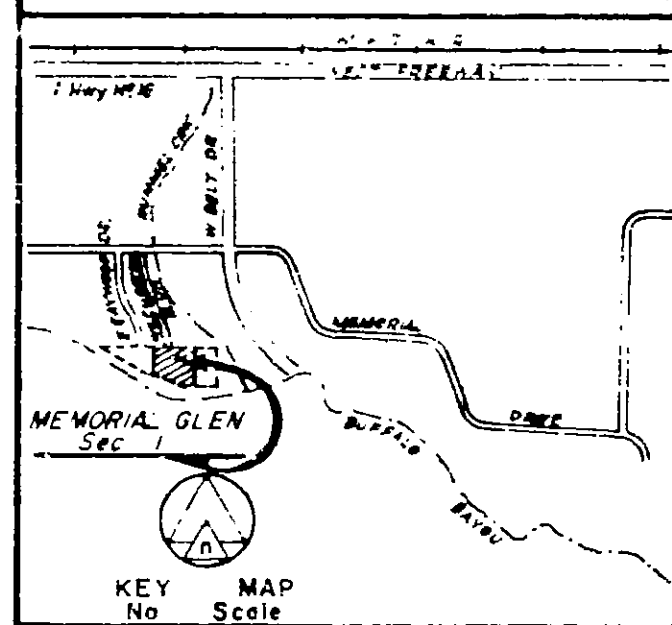
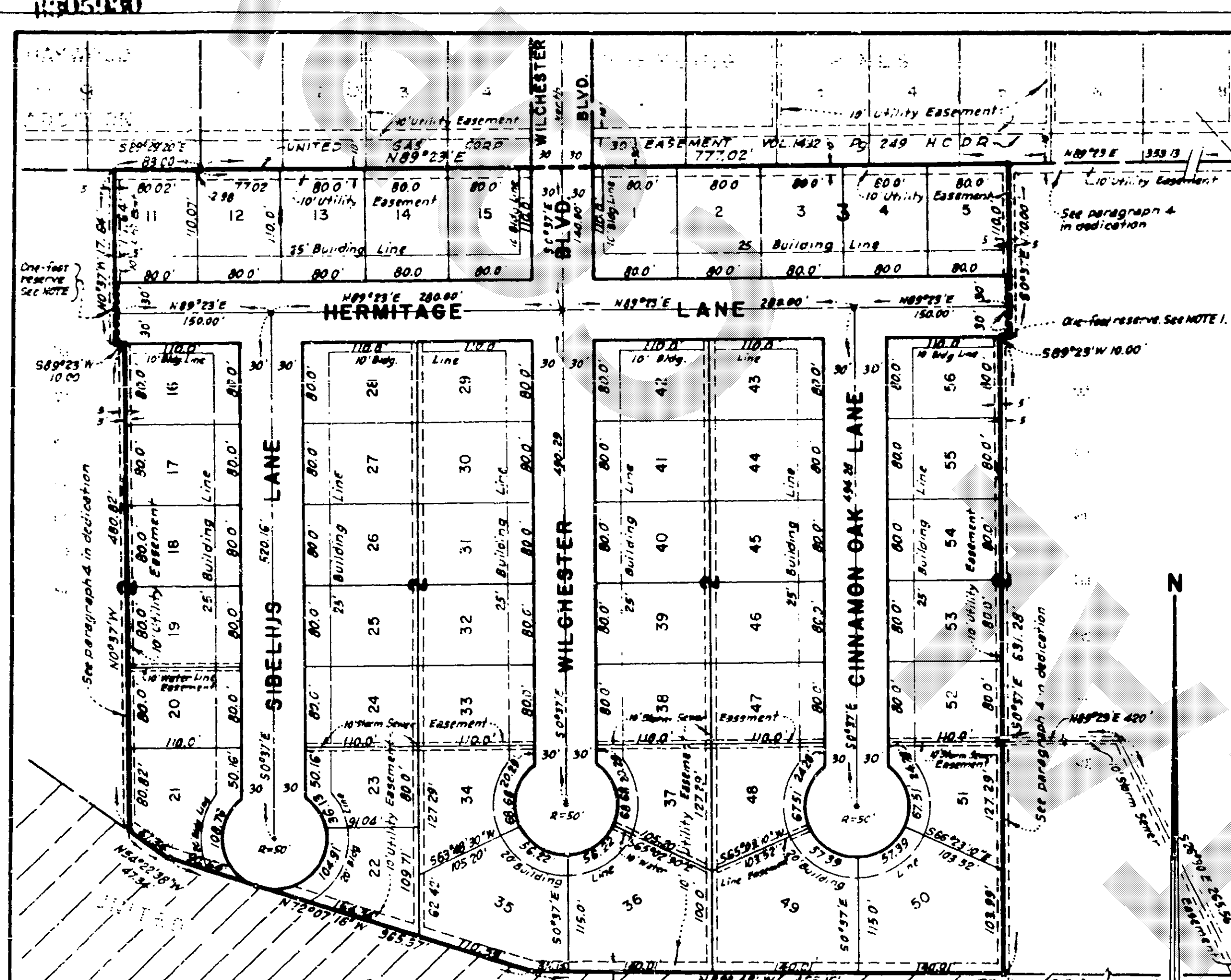
STATE OF TEXAS  
COUNTY OF HARRIS  
I, R. E. TURRENTINE, JR., Clerk of the County Court of Harris County, Texas, do hereby certify that the within instrument with its certificate of authentication was filed for registration in my office on MARCH 13, 1961, at 1:31 o'clock P.M., and duly recorded on MARCH 21, 1961, at 10:10 o'clock A.M., Vol. 78, Page 50 of record of MAP for said County.  
WITNESS my hand and seal of office, at Houston, the day and date last above written.

R. E. TURRENTINE, JR., Clerk, County Court  
Harris County, Texas

KEY MAP  
MAP RECORDS OF  
VOL. 78 PAGE 50  
R. E. TURRENTINE, JR.  
COUNTY CLERK  
HARRIS COUNTY, TEXAS

THIS CERTIFICATE IS VALID ONLY AS TO THE INSTRUMENT ON WHICH THE ORIGINAL SIGNATURE WAS MADE AND TO THE EXTENT THE INSTRUMENT IS CORRECTLY RECORDED.

MEMORIAL GLEN SEC 1  
THIS IS 1 OF 2 PAGES



NOTES: 1. A one-foot reserve dedicated to the public in fee as a buffer separation between the side or end of streets in subdivision plans where such streets abut adjacent acreage tracts. The condition of such dedication being that when the adjacent property is subdivided in a recorded plat the one-foot reserve shall thereupon become vested in the public for street right-of-way purposes (and the fee title thereto shall revert to and vest in the dedicant, his heirs, assigns or successors). 2. All utility, water line and storm sewer easements shown extend 5' on either side of a common lot line unless otherwise indicated.

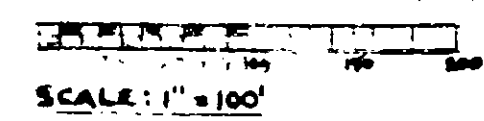
# MEMORIAL GLEN SECTION 1

A SUBDIVISION OF 14.86 ACRES IN THE CHRISTIANA WILLIAMS SURVEY A-834, HARRIS COUNTY, TEXAS.

FIRST MEMORIAL GLEN CORPORATION  
SECOND MEMORIAL GLEN CORPORATION  
THIRD MEMORIAL GLEN CORPORATION

JOSEPH J. JOHNSON, PRESIDENT  
PAUL A. LEDERER  
CIVIL ENGINEER - LAND SURVEYOR  
HOUSTON, TEXAS

SCALE 1" = 100' DATE JAN. 1961



51 LOTS 3 BLOCKS

STATE OF TEXAS  
COUNTY OF HARRIS  
I, JOSEPH J. JOHNSON and ROBERT L. BUCK, President and Secretary respectively of FIRST MEMORIAL GLEN CORPORATION, SECOND MEMORIAL GLEN CORPORATION and THIRD MEMORIAL GLEN CORPORATION, owners of the property subdivided in the above and foregoing map of MEMORIAL GLEN, SECTION 1, do hereby make subdivision of said property for and on behalf of said FIRST MEMORIAL GLEN CORPORATION, SECOND MEMORIAL GLEN CORPORATION and THIRD MEMORIAL GLEN CORPORATION, according to the lines, lots, building lines, streets, alleys, parks and easements thereon shown and designate said subdivision as MEMORIAL GLEN SECTION 1, located in the CHRISTIANA WILLIAMS SURVEY A-834, HARRIS COUNTY, TEXAS, and on behalf of said FIRST MEMORIAL GLEN CORPORATION, SECOND MEMORIAL GLEN CORPORATION and THIRD MEMORIAL GLEN CORPORATION, dedicate to the public use, as such, all of the streets, alleys, parks and easements shown thereon forever and do hereby waive any claims for damages occasioned by the establishing of grades as approved for the streets and alleys dedicated, or occasioned by the alteration of the surface of any portion of the streets or alleys to conform to such grades and do hereby bind ourselves, our successors and assigns to warrant and forever defend the title to the land so dedicated.  
2. We, PAT O'NEIL, NORMAN W. ONEIL and THE FIRST-WICHITA NATIONAL BANK OF WICHITA FALLS, TEXAS, TRUSTEE, owners and holders of a lien upon said property, do hereby consent to the above and foregoing map of MEMORIAL GLEN, SECTION 1, and do hereby consent to the dedication of the streets and alleys dedicated, and do hereby in all things subordinate to said subdivision and dedication the lien against said land owned and held by us.  
3. There is also dedicated for utilities an unobstructed aerial easement five (5) feet wide from a plane twenty (20) feet above the ground upward located adjacent to all easements shown hereon.  
4. We hereby covenant and agree with the City of Houston and/or Harris County and/or any property owner that utility easements shown on acreage are hereby established as shown.  
5. We hereby covenant and agree that all lots within the boundaries of this subdivision are for residential purposes unless otherwise noted.  
6. IN TESTIMONY WHEREOF, the FIRST MEMORIAL GLEN CORPORATION, SECOND MEMORIAL GLEN CORPORATION and THIRD MEMORIAL GLEN CORPORATION, have caused these presents to be signed by JOSEPH J. JOHNSON, its President, thereunto authorized, attested by its Secretary, ROBERT L. BUCK, and its common seal hereunto affixed this 11 day of MARCH, 1961.

LIENHOLDERS: JOHN C. HARRIS, JR., Agent and Attorney-in-Fact for Pat O'Neil, Norman W. O'Neil and The First-Wichita National Bank, Wichita Falls, Texas, Trustee.  
OWNERS: FIRST MEMORIAL GLEN CORPORATION, SECOND MEMORIAL GLEN CORPORATION, THIRD MEMORIAL GLEN CORPORATION.  
By Joseph J. Johnson  
Joseph J. Johnson, President  
Attest: Robert L. Buck  
Robert L. Buck, Secretary

STATE OF TEXAS  
COUNTY OF HARRIS  
Before me, the undersigned authority, on this day personally appeared JOSEPH J. JOHNSON, President and ROBERT L. BUCK, Secretary of the FIRST MEMORIAL GLEN CORPORATION, SECOND MEMORIAL GLEN CORPORATION and THIRD MEMORIAL GLEN CORPORATION, known to me to be the persons whose names are subscribed to the foregoing instrument, and acknowledged to me that they executed the same for the purposes and consideration therein expressed, and in the capacity therein and herein set out, and as the act and deed of said corporations.  
Given under my hand and seal of office, this 11 day of MARCH, 1961.

Paul A. Lederer  
Notary Public in and for Harris County, Texas.  
My Comm. Expires 12-31-1961  
My Comm. No. 11111

STATE OF TEXAS  
COUNTY OF HARRIS  
Before me, the undersigned authority, on this day personally appeared, JOHN C. HARRIS, JR., Agent and Attorney-in-Fact for PAT O'NEIL, NORMAN W. ONEIL, and THE FIRST-WICHITA NATIONAL BANK OF WICHITA FALLS, TEXAS, TRUSTEE, known to me to be the person whose name is subscribed to the foregoing instrument and acknowledged to me that he executed the same for the purposes and consideration therein expressed and in the capacity therein and herein set out.  
Given under my hand and seal of office, this 11 day of MARCH, 1961.

Paul A. Lederer  
Notary Public in and for Harris County, Texas.  
My Comm. Expires 12-31-1961  
My Comm. No. 11111

This is to certify that I, PAUL A. LEDERER, a Registered Civil Engineer of the State of Texas, have plotted the above subdivision from an actual survey on the ground and that all block corners, angle points, and points of curve are properly marked with iron pipes (1-1/4" Gal. Iron Pipes), and that this plat correctly represents that survey made by me.

Paul A. Lederer  
Paul A. Lederer, Reg. No. 7181

CITY OF HOUSTON  
COUNTY OF HARRIS  
This is to certify, that the City Planning Commission of the City of Houston, Texas, has approved this plat and subdivision of MEMORIAL GLEN, SECTION 1, as shown hereon.  
IN TESTIMONY WHEREOF, witness the official signature of the Chairman and Secretary of the City Planning Commission of the City of Houston, Texas, this 28th day of February, 1961.

Ralph S. Ellifant  
Secretary - Engineer  
M. Edwards  
Chairman

STATE OF TEXAS  
COUNTY OF HARRIS  
I, R. E. TURRENTINE, JR., Clerk of the County Court of Harris County, Texas, do hereby certify that the within instrument with its certificate of authentication was filed for registration in my office on MARCH 13, 1961, at 1:31 o'clock P.M., and duly recorded on MARCH 21, 1961, at 10:10 o'clock A.M., Vol. 78, Page 50 of record of MAP for said County.  
WITNESS my hand and seal of office, at Houston, the day and date last above written.

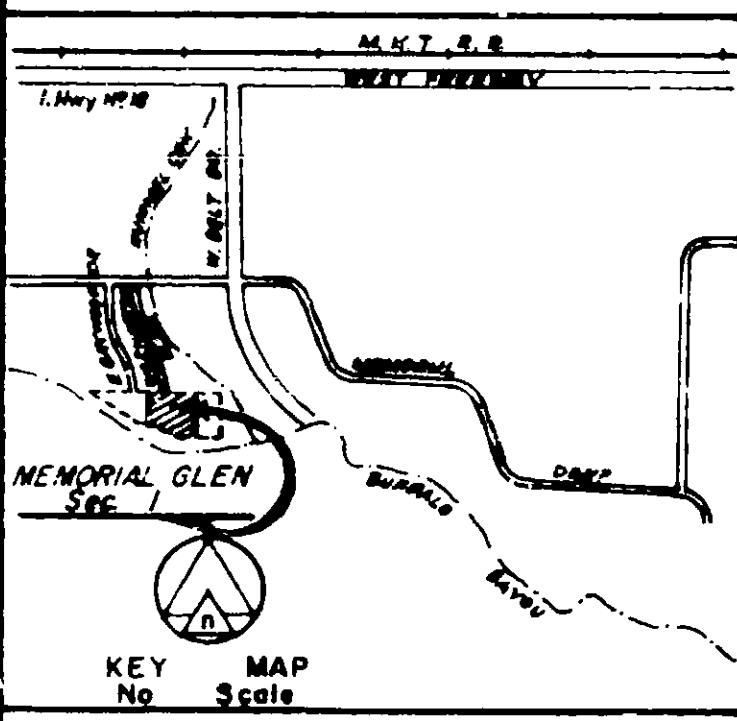
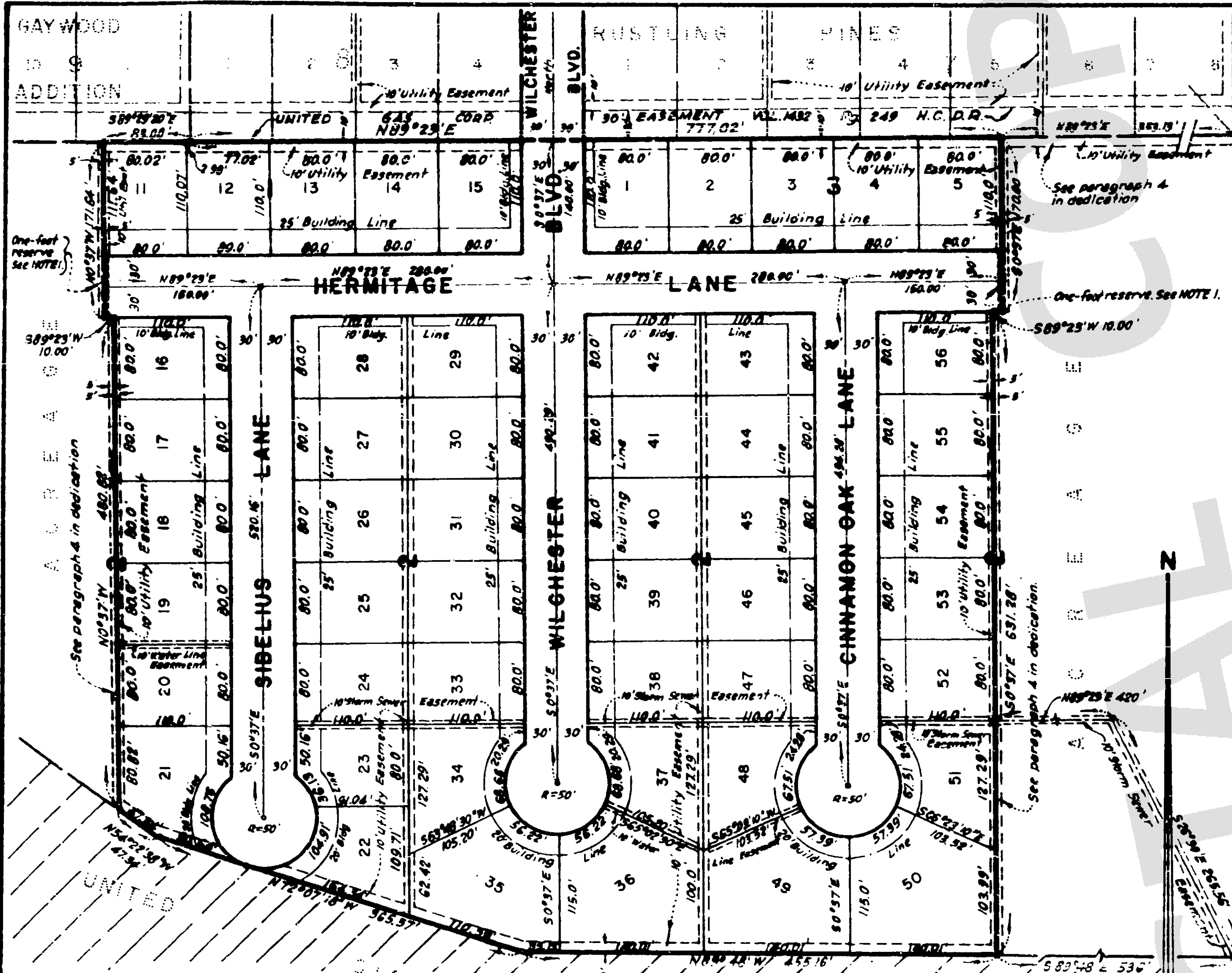
R. E. TURRENTINE, JR., Clerk, County Court  
Harris County, Texas

KEY MAP  
MAP RECORDS OF  
VOL. 78 PAGE 50  
R. E. TURRENTINE, JR.  
COUNTY CLERK  
HARRIS COUNTY, TEXAS

THIS CERTIFICATE IS VALID ONLY AS TO THE INSTRUMENT ON WHICH THE ORIGINAL SIGNATURE WAS AFFIXED. ANY OTHER INSTRUMENT WHICH ATTEMPTS TO REPRODUCE OR COPY THIS CERTIFICATE IS VOID.

MEMORIAL GLEN SEC 1  
THIS IS 1 OF 2 PAGES





NOTES: 1. A one-foot reserve dedicated to the public in fee as a buffer separation between the side or end of streets in subdivision plots where such streets abut adjacent acreage tracts, the condition of such dedication being that when the adjacent property is subdivided in a recorded plat the one-foot reserve shall thereupon become vested in the public for street right-of-way purposes (and the fee title thereto shall revert to and re-vest in the dedicator, his heirs, assigns or successors). 2. All utility, water line and storm sewer easements shown extend 5' on either side of a common lot line unless otherwise indicated.

MEMORIAL GLEN SECTION 1

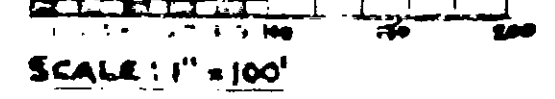
A SUBDIVISION OF 14.86 ACRES IN THE CHRISTIANA WILLIAMS SURVEY A-834, HARRIS COUNTY, TEXAS.

FIRST MEMORIAL GLEN CORPORATION SECOND MEMORIAL GLEN CORPORATION THIRD MEMORIAL GLEN CORPORATION

JOSEPH J. JOHNSON, PRESIDENT OWNERS

PAUL A. LEDERER CIVIL ENGINEER - LAND SURVEYOR HOUSTON, TEXAS

SCALE 1" = 100' DATE JAN. 1961



51 LOTS 3 BLOCKS

STATE OF TEXAS COUNTY OF HARRIS I, We, JOSEPH J. JOHNSON and ROBERT L. BUCK, President and Secretary respectively of FIRST MEMORIAL GLEN CORPORATION, SECOND MEMORIAL GLEN CORPORATION and THIRD MEMORIAL GLEN CORPORATION, owners of the property subdivided in the above and foregoing map of MEMORIAL GLEN SECTION 1, do hereby make subdivision of said property for and on behalf of said FIRST MEMORIAL GLEN CORPORATION, SECOND MEMORIAL GLEN CORPORATION and THIRD MEMORIAL GLEN CORPORATION, according to the lines, lots, building lines, streets, alleys, parks and easements thereon shown and designate said subdivision as MEMORIAL GLEN SECTION 1, located in the CHRISTIANA WILLIAMS SURVEY A-834, HARRIS COUNTY, TEXAS, and on behalf of said FIRST MEMORIAL GLEN CORPORATION, SECOND MEMORIAL GLEN CORPORATION and THIRD MEMORIAL GLEN CORPORATION, dedicate to the public use, as such, all of the streets, alleys, parks and easements shown thereon forever and do hereby waive any claims for damages occasioned by the establishing of grades as approved for the streets and alleys dedicated, or occasioned by the alteration of the surface of any portion of the streets or alleys to conform to such grades and do hereby bind ourselves, our successors and assigns to warrant and forever defend the title to the land so dedicated.

LIENHOLDERS FIRST MEMORIAL GLEN CORPORATION - SECOND MEMORIAL GLEN CORPORATION - THIRD MEMORIAL GLEN CORPORATION Owners: Joseph J. Johnson, Robert L. Buck. John C. Harris, Jr., Agent and Attorney-in-Fact for: Pat O'Neil, Norman W. O'Neil and The First-Wichita National Bank, Wichita Falls, Texas, Trustee.

STATE OF TEXAS COUNTY OF HARRIS Before me, the undersigned authority, on this day personally appeared JOSEPH J. JOHNSON, President and ROBERT L. BUCK, Secretary of the FIRST MEMORIAL GLEN CORPORATION, SECOND MEMORIAL GLEN CORPORATION and THIRD MEMORIAL GLEN CORPORATION, known to me to be the persons whose names are subscribed to the foregoing instrument, and acknowledged to me that they executed the same for the purposes and consideration therein expressed, and in the capacity therein and herein set out, and as the act and deed of said corporations.

STATE OF TEXAS COUNTY OF HARRIS Before me, the undersigned authority, on this day personally appeared, JOHN C. HARRIS, JR., Agent and Attorney-in-Fact for PAT O'NEIL, NORMAN W. O'NEIL, and THE FIRST-WICHITA NATIONAL BANK OF WICHITA FALLS, TEXAS, TRUSTEE, known to me to be the person whose name is subscribed to the foregoing instrument and acknowledged to me that he executed the same for the purposes and consideration therein expressed and in the capacity therein and herein set out.

CITY OF HOUSTON COUNTY OF HARRIS This is to certify that the City Planning Commission of the City of Houston, Texas, has approved this plat and subdivision of MEMORIAL GLEN, SECTION 1, as shown hereon.

STATE OF TEXAS COUNTY OF HARRIS This is to certify that I, PAUL A. LEDERER, a Registered Civil Engineer of the State of Texas, have plotted the above subdivision from an actual survey on the ground and that all block corners, angle points, and points of curve are properly marked with iron pipes (1-1/4" Galv. Iron Pipes), and that this plat correctly represents that survey made by me.

STATE OF TEXAS COUNTY OF HARRIS IN TESTIMONY WHEREOF, witness the official signature of the Chairman and Secretary of the City Planning Commission of the City of Houston, Texas, this 28th day of February, 1961.

STATE OF TEXAS COUNTY OF HARRIS I, R.E. TURRENTINE, JR., Clerk of the County Court of Harris County, Texas, do hereby certify that the within instrument with its certificate of authentication was filed for registration in my office on MARCH 13, 1961, at 1:31 o'clock P.M., and duly recorded on MARCH 21, 1961, at 10:10 A.M. for said County.

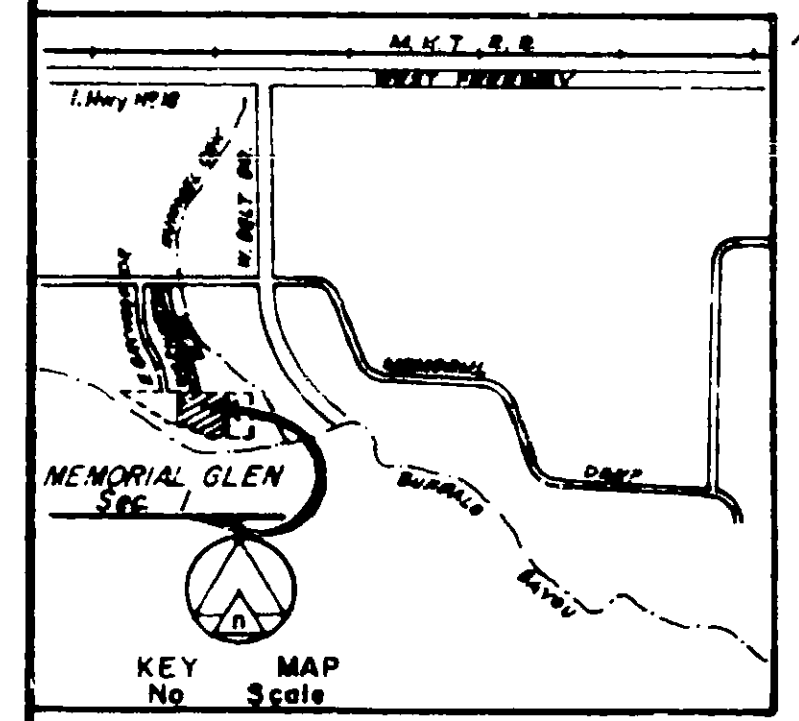
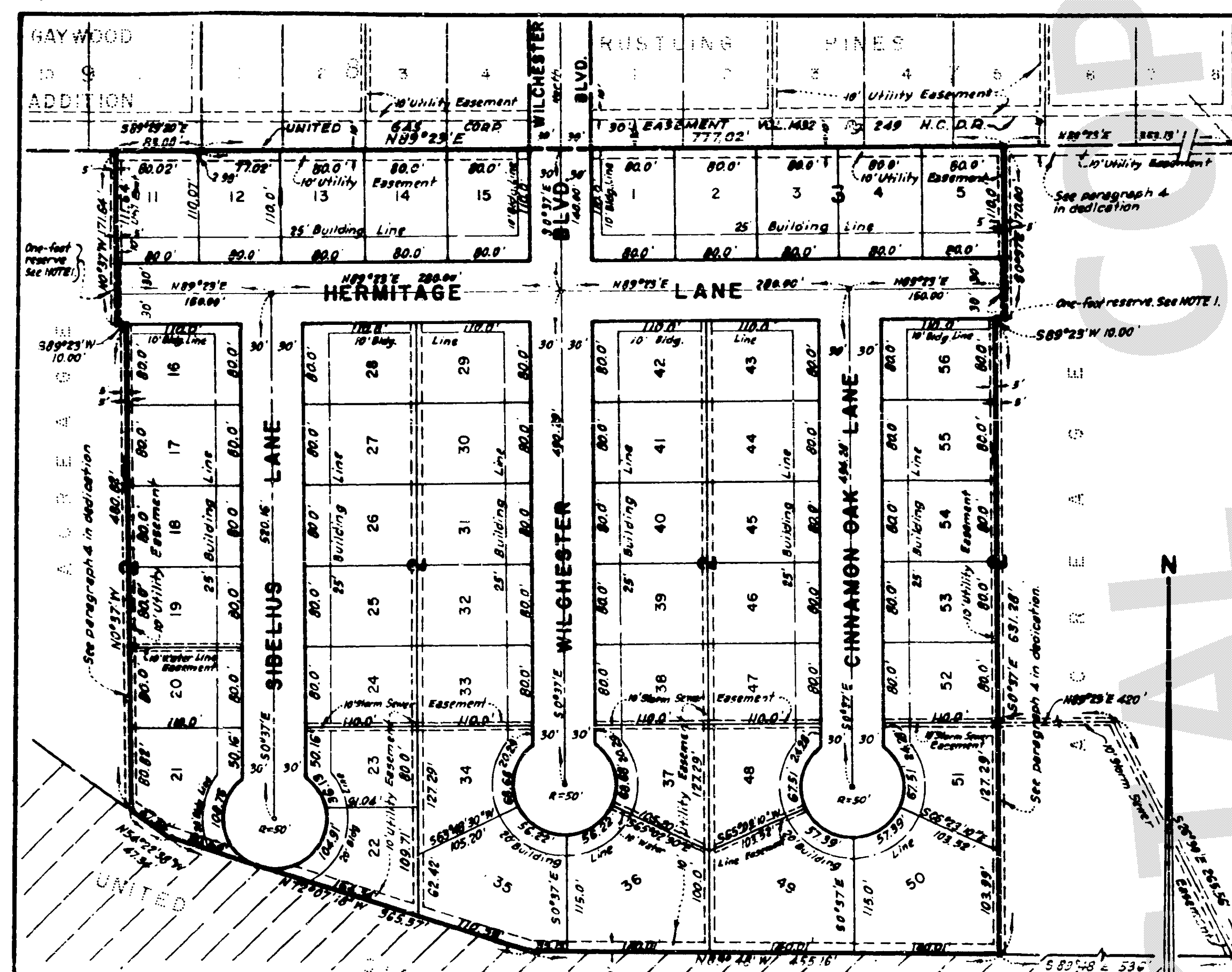
WITNESS my hand and seal of office, at Houston, the day and date last above written. R.E. TURRENTINE, JR., Clerk, County Court Harris County, Texas.

MAP RECORDS OF HARRIS COUNTY, TEXAS VOL. 78 PAGE 51 R.E. TURRENTINE, JR. COUNTY CLERK HARRIS COUNTY, TEXAS

MEMORIAL GLEN SEC 1 THIS IS 1 OF 2 PAGES

THIS CERTIFICATE IS VALID ONLY AS TO THE INSTRUMENT ON WHICH THE ORIGINAL SIGNATURE IS AFFIXED AND ONLY THEN TO THE EXTENT THAT SUCH INSTRUMENT IS NOT AMENDED OR CHANGED AFTER RECORDING.





NOTES: 1. A one-foot reserve dedicated to the public in fee as a buffer separation between the side or end of streets in subdivision plots where such streets abut adjacent acreage tracts, the condition of such dedication being that when the adjacent property is subdivided in a recorded plat the one-foot reserve shall thereupon become vested in the public for street right-of-way purposes (and the fee title thereto shall revert to and revest in the dedicating, his heirs, assigns or successors).  
 2. All 10' utility, water line and storm sewer easements shown extend 5' on either side of a common lot line unless otherwise indicated.

**MEMORIAL GLEN SECTION 1**

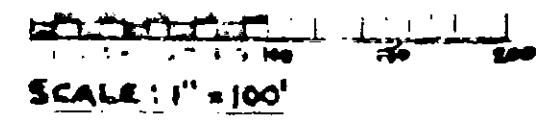
A SUBDIVISION OF 14.86 ACRES IN THE CHRISTIANA WILLIAMS SURVEY A-834, HARRIS COUNTY, TEXAS.

FIRST MEMORIAL GLEN CORPORATION  
 SECOND MEMORIAL GLEN CORPORATION  
 THIRD MEMORIAL GLEN CORPORATION

JOSEPH J. JOHNSON, PRESIDENT  
 OWNERS

PAUL A. LEDERER  
 CIVIL ENGINEER - LAND SURVEYOR  
 HOUSTON, TEXAS

SCALE 1" = 100' DATE JAN. 1961



51 LOTS 3 BLOCKS

STATE OF TEXAS  
 COUNTY OF HARRIS

I, JOSEPH J. JOHNSON and ROBERT L. BUCK, President and Secretary respectively of FIRST MEMORIAL GLEN CORPORATION, SECOND MEMORIAL GLEN CORPORATION and THIRD MEMORIAL GLEN CORPORATION, owners of the property subdivided in the above and foregoing map of MEMORIAL GLEN SECTION 1, do hereby make subdivision of said property for and on behalf of said FIRST MEMORIAL GLEN CORPORATION, SECOND MEMORIAL GLEN CORPORATION and THIRD MEMORIAL GLEN CORPORATION, according to the lines, lots, building lines, streets, alleys, parks and easements thereon shown and designate said subdivision as MEMORIAL GLEN SECTION 1, located in the CHRISTIANA WILLIAMS SURVEY A-834, HARRIS COUNTY, TEXAS, and on behalf of said FIRST MEMORIAL GLEN CORPORATION, SECOND MEMORIAL GLEN CORPORATION and THIRD MEMORIAL GLEN CORPORATION, dedicate to the public use, as such, all of the streets, alleys, parks and easements shown thereon forever and do hereby waive any claims for damages occasioned by the establishing of grades as approved for the streets and alleys dedicated, or occasioned by the alteration of the surface of any portion of the streets or alleys to conform to such grades and do hereby bind ourselves, our successors and assigns to warrant and forever defend the title to the land so dedicated.  
 2. We, PAT O'NEIL, NORMAN W. O'NEIL and THE FIRST-WICHITA NATIONAL BANK OF WICHITA FALLS, TEXAS, TRUSTEE, owners and holders of a lien upon said property, acting herein, by and through our Agent and Attorney-in-Fact, JOHN C. HARRIS, JR., of Harris County, Texas, do hereby ratify and confirm said subdivision and dedication, and do hereby in all things subordinate to said subdivision and dedication the lien against said land owned and held by us.  
 3. There is also dedicated for utilities an unobstructed aerial easement five (5) feet wide from a plane twenty (20) feet above the ground upward located adjacent to all easements shown hereon.  
 4. We hereby covenant and agree with the City of Houston and/or Harris County and/or any property owner that utility easements shown on acreage are hereby established as shown.  
 5. We hereby covenant and agree that all lots within the boundaries of this subdivision are for residential purposes unless otherwise noted.  
 6. IN TESTIMONY WHEREOF, the FIRST MEMORIAL GLEN CORPORATION, SECOND MEMORIAL GLEN CORPORATION and THIRD MEMORIAL GLEN CORPORATION, have caused these presents to be signed by JOSEPH J. JOHNSON, its President, thereunto authorized, attested by its Secretary, ROBERT L. BUCK, and its common seal hereunto affixed this 13th day of March, 1961.

LIENHOLDERS  
 OWNERS  
 FIRST MEMORIAL GLEN CORPORATION - SECOND MEMORIAL GLEN CORPORATION - THIRD MEMORIAL GLEN CORPORATION  
 By Joseph J. Johnson  
 Joseph J. Johnson, President  
 Attest: Robert L. Buck  
 Robert L. Buck, Secretary

STATE OF TEXAS  
 COUNTY OF HARRIS

Before me, the undersigned authority, on this day personally appeared JOSEPH J. JOHNSON, President and ROBERT L. BUCK, Secretary of the FIRST MEMORIAL GLEN CORPORATION, SECOND MEMORIAL GLEN CORPORATION and THIRD MEMORIAL GLEN CORPORATION, known to me to be the persons whose names are subscribed to the foregoing instrument, and acknowledged to me that they executed the same for the purposes and consideration therein expressed, and in the capacity therein and herein set out, and as the act and deed of said corporations.  
 Given under my hand and seal of office, this 13th day of March, 1961.

Laura Frances Pivens  
 Notary Public in and for Harris County, Texas.  
 My Commission Expires June 1, 1961

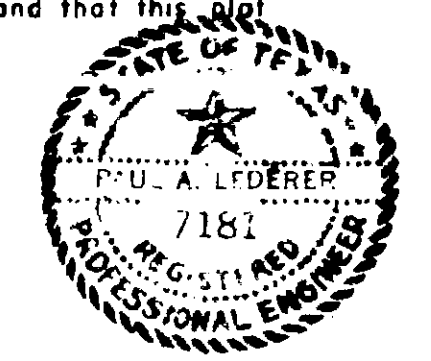
STATE OF TEXAS  
 COUNTY OF HARRIS

Before me, the undersigned authority, on this day personally appeared, JOHN C. HARRIS, JR., Agent and Attorney-in-Fact for PAT O'NEIL, NORMAN W. O'NEIL, and THE FIRST-WICHITA NATIONAL BANK OF WICHITA FALLS, TEXAS, TRUSTEE, known to me to be the person whose name is subscribed to the foregoing instrument and acknowledged to me that he executed the same for the purposes and consideration therein expressed and in the capacity therein and herein set out.  
 Given under my hand and seal of office, this 13th day of March, 1961.

Laura Frances Pivens  
 Notary Public in and for Harris County, Texas.  
 My Commission Expires June 1, 1961

This is to certify that I, PAUL A. LEDERER, a Registered Civil Engineer of the State of Texas, have plotted the above subdivision from an actual survey on the ground and that all block corners, angle points, and points of curve are properly marked with iron pipes (1-1/4" Galv. Iron Pipes), and that this plat correctly represents that survey made by me.

Paul A. Lederer  
 Paul A. Lederer, Reg. No. 7181



CITY OF HOUSTON  
 COUNTY OF HARRIS

This is to certify that the City Planning Commission of the City of Houston, Texas, has approved this plat and subdivision of MEMORIAL GLEN, SECTION 1, as shown hereon.  
 IN TESTIMONY WHEREOF, witness the official signature of the Chairman and Secretary of the City Planning Commission of the City of Houston, Texas, this 28th day of February, 1961.

Ralph S. Ellipit Secretary - Engineer  
M. E. Swales Chairman

STATE OF TEXAS  
 COUNTY OF HARRIS

I, R. E. TURRENTINE, JR., Clerk of the County Court of Harris County, Texas, do hereby certify that the within instrument with its certificate of authentication was filed for registration in my office on MARCH 13, 1961, at 1:31 o'clock P.M., and duly recorded on MARCH 21, 1961, at 10:10 A.M. for said County.  
 WITNESS my hand and seal of office, at Houston, the day and date last above written.

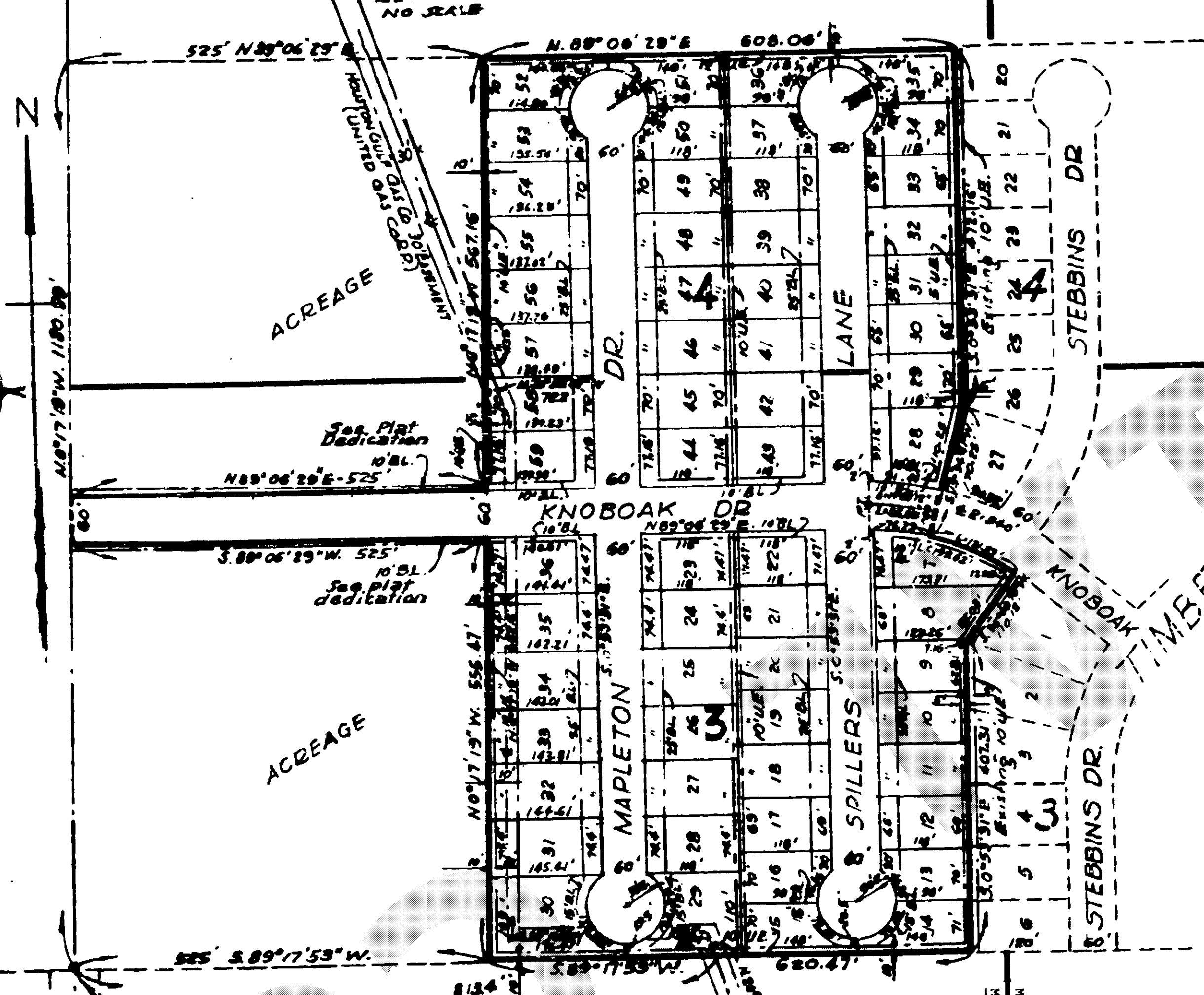
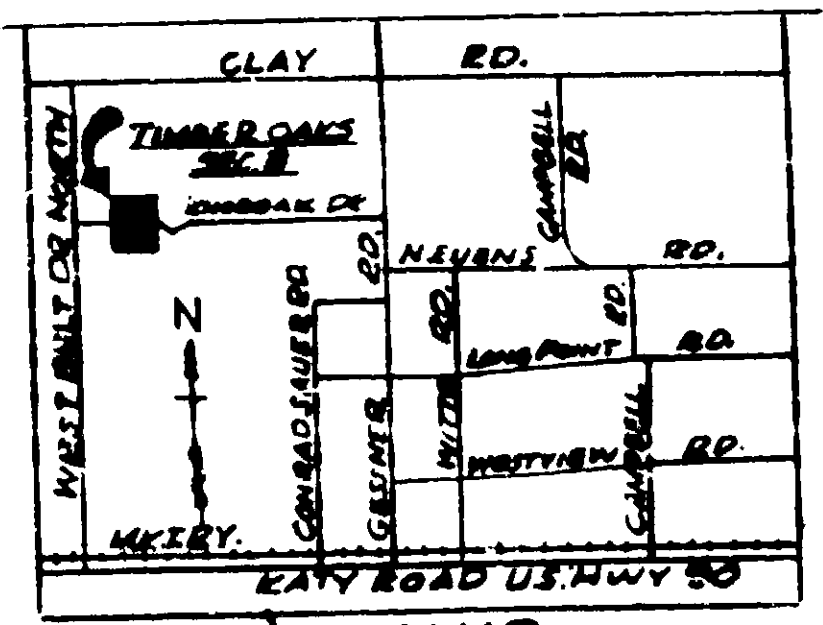
R. E. TURRENTINE, JR., Clerk, County Court  
 Harris County, Texas.

THIS CERTIFICATE IS VALID ONLY AS TO THE INSTRUMENT ON WHICH THE ORIGINAL SIGNATURE IS AFFIXED AND ONLY TO THE EXTENT THAT SUCH INSTRUMENT IS NOT AMENDED OR CHANGED AFTER RECORDING.

MAP RECORDS OF HARRIS COUNTY, TEXAS VOL. 78 PAGE 51 R. E. TURRENTINE, JR. COUNTY CLERK HARRIS COUNTY, TEXAS

MEMORIAL GLEN SEC 1 THIS IS 1 OF 2 PAGES





STATE OF TEXAS  
COUNTY OF HARRIS

We, Walter A. Alton and Betty Lou Williams, President and Secretary respectively of Southern Investors Construction Co., Inc., owner of the property described in the above and foregoing map of Timber Oaks Sec. 3, do hereby certify that the subdivision of said property into and on behalf of said Southern Investors Construction Co., Inc. as shown on the foregoing map, was made in accordance with the provisions of Chapter 208, Act of the 55th Legislature, 1957, and that the same is in full compliance with the provisions of said Act.

We, J. C. Lawson, III, and wife Catherine Lawson, and Houston Bank & Trust Co., owners and holders of liens upon said property do hereby certify and acknowledge and declare, and do hereby in all things acknowledge to said subdivision and dedication the liens against said land now on file by us.

There is also dedicated for utilities an underground easement five (5) feet wide from a plane twenty (20) feet above the ground surface, located adjacent to all streets shown herein.

The hereby consent and agree that all lots within the boundaries of this subdivision are for residential purposes unless otherwise noted.

The hereby consent and agree with the City of Houston and/or Harris County that building lines shown on maps are hereby established as shown.

IN WITNESS WHEREOF, Southern Investors Construction Co., Inc. has caused these presents to be signed by Walter A. Alton, its President, and Betty Lou Williams, its Secretary, both of whom are duly authorized officers of said corporation, this 22nd day of April, 1960.

WALTER A. ALTON, President  
BETTY LOU WILLIAMS, Secretary

Houston Bank & Trust Co.  
J. C. LAWSON, III, Vice President  
CATHERINE LAWSON, Vice President

Southern Investors Construction Co., Inc.  
WALTER A. ALTON, President  
BETTY LOU WILLIAMS, Secretary

STATE OF TEXAS  
COUNTY OF HARRIS

I, Ralph C. Hilton, a registered Engineer of the State of Texas, have plotted the above subdivision from an actual survey on the ground; and that all block corners, angle points and points of curve are properly marked with iron pipes (1 1/2" x 3" pipe 3' long), and that this plat correctly represents that survey made by me.

This is to certify that the City Planning Commission of the City of Houston, Texas, has approved this plat and subdivision of Timber Oaks Sec. 3 as shown herein.

IN WITNESS WHEREOF, I, Ralph C. Hilton, a registered Engineer of the State of Texas, have caused these presents to be signed by me, this 22nd day of April, 1960.

Ralph C. Hilton  
Engineer  
Texas Registration No. 4696

Walter A. Alton  
Vice - Chairman

STATE OF TEXAS  
COUNTY OF HARRIS

I, R. E. Tarrant, Jr., Clerk of the County Court of Harris County, Texas do hereby certify that the within instrument with the conditions of authentication was filed for registration in my office on 4/23/60, at 10:30 A.M., and duly recorded on 4/12/60, at 2:40 P.M. in Vol. 77, page 52, of record of Map for said County.

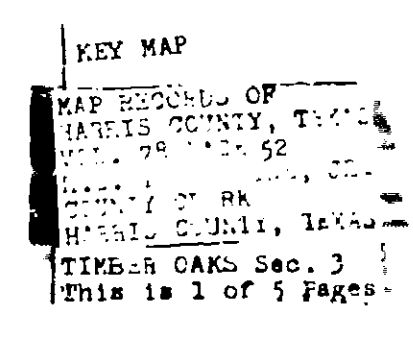
WITNESS my hand and seal of office, at Houston, the day and date last above written.

R. E. Tarrant, Jr., Clerk County Court  
Harris County, Texas

NOTICE: THIS INSTRUMENT IS VALID ONLY AS TO THE SIGNATURE AND ONLY THEN IF THE INSTRUMENT IS NOT ALTERED OR CHANGED AFTER RECORDING.

- NOTES:
- (1) All side lot lines are either perpendicular or radial to street frontage unless otherwise noted.
  - (2) U.E. indicates utility easement
  - (3) All 10' utility easements shown extend 5' on either side of a common lot line unless otherwise indicated.
  - (4) B.L. indicates building line
  - (5) G.E. 5' x 25' Guy easement.

**TIMBER OAKS**  
SEC. 3  
BEING A 17.23 ACRE TRACT OF LAND  
IN THE  
JOHN M. SWISHER SURVEY ABST. 1279  
HARRIS CO., TEXAS  
SCALE 1"=100' APRIL 22, 1960  
RALPH C. HILTON  
CONSULTING ENGINEER  
OWNER: SOUTHERN INVESTORS CONST. CO. INC.  
WALTER M. MISCHER, PRESIDENT  
705 HOLMES RD. HOUSTON, TEX.  
2 BLOCKS 62 LOTS









MATCH LINE  
MATCH LINE

W. VEST BELT  
S. DRIVE NORTH

N. 0°17'19"W. 1180.00'

See Page 56

ACREAGE

See Plat  
Dedication

N. 89°06'29"E-525'  
10'BL.

S. 89°06'29"W. 525'  
10'BL.

See plat  
dedication

ACREAGE

525' S. 89°17'53"W.

N.W. COR. GEO. BELLOW'S SUR.  
S.W. COR. J.M. SWISHER SUR.

MAP RECORDS OF  
HARRIS COUNTY, TEXAS  
VOL. 78 PAGE 53  
R.E. TURRENTINE, JR.  
COUNTY CLERK  
HARRIS COUNTY, TEXAS  
TIMBER OAKS Sec. 3  
This is 1 of 5 Pages

1954 MAR 25 AM 10 48

GAS CO. EASEMENT  
30' EASEMENT



DR.

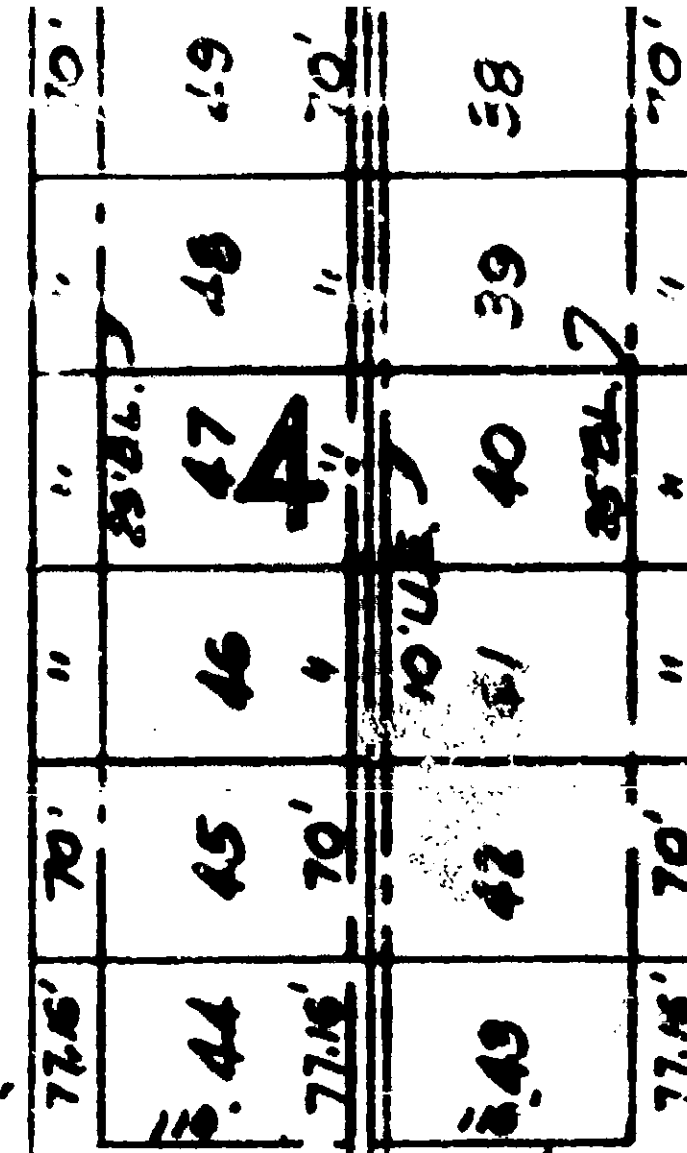
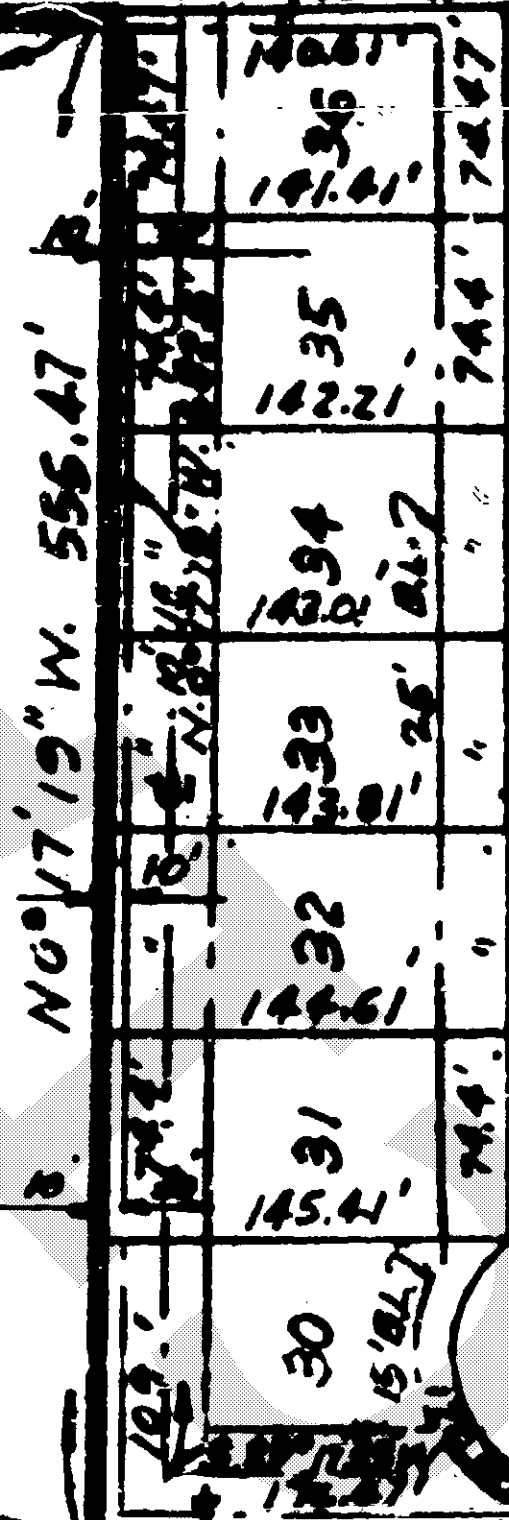
KNOBOAK DR

S. 10'BL.

8'

MAPLETON

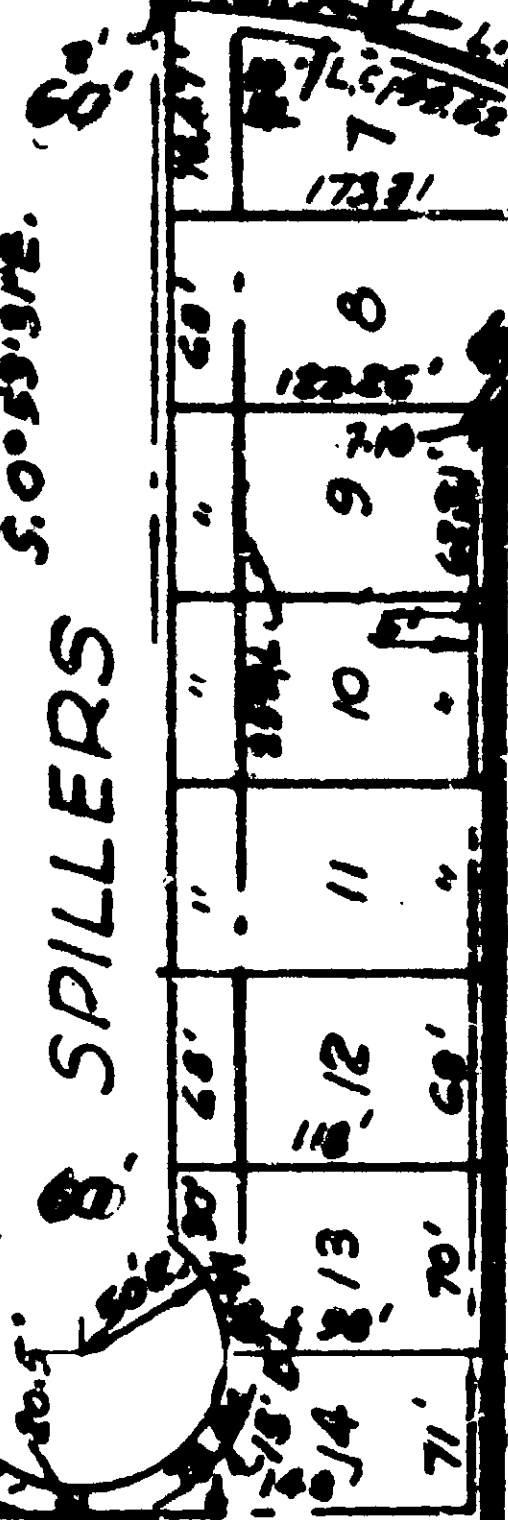
8'



LANE

SPILLERS

ACREAGE



MATCH LINE  
MATCH LINE

See Page 54

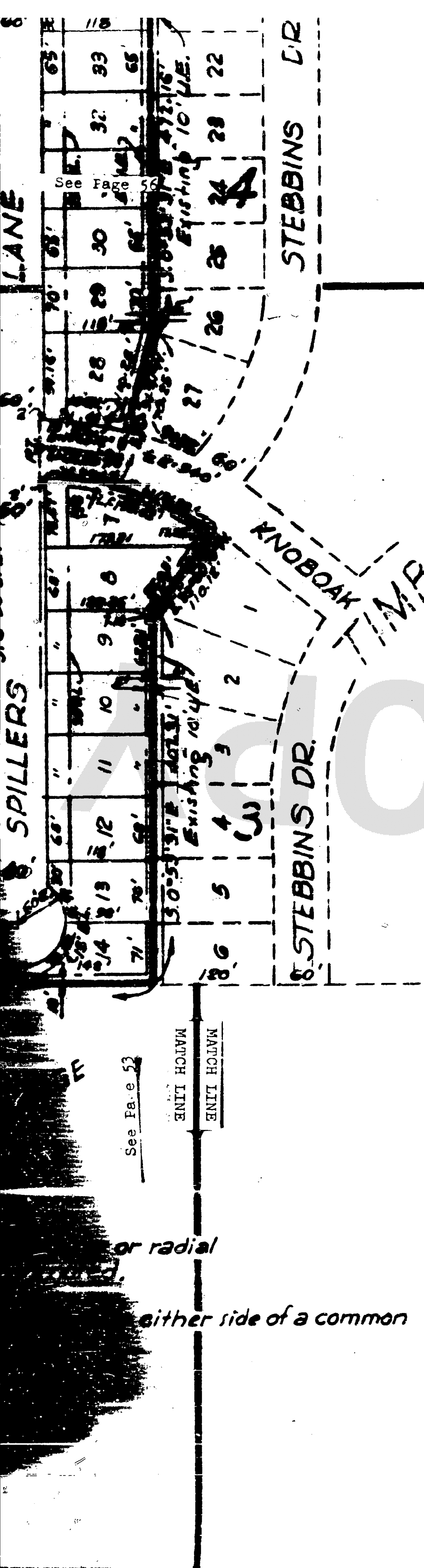
NOTES:

- (1) All side lot lines are either perpendicular or radial to street frontage unless otherwise noted.
- (2) U.E. Indicates Utility easement
- (3) All 10' Utility easements shown extend 5' on either side of a corner lot line unless otherwise indicated
- (4) B.L. indicates building line
- (5) G.E. 3'x35' Guy easement.

See Page 55  
STEBBINS DR

STEBBINS DR.





J. Ed Eisenmann, 117, and wife,  
Catherine Eisenmann  
*J. Ed Eisenmann*  
*Catherine Eisenmann*

Houston 1000 6 1 AMAZ, CO.  
BY: *Paul A. Misch*  
Vice President  
ATTEST:  
*Walter M. Mischer*  
Asst. Cashier

Walter M. Mischer  
President  
ATTEST:  
*Paul A. Misch*  
Secretary

See Page 551

STATE OF TEXAS )  
(COUNTY OF HARRIS )

Before the undersigned authority, on this day personally appeared Walter M. Mischer, President, and Betty Lee Hillman, Secretary of Southern Investors (an association Co., Inc.; J. Ed. Eisenmann, 117, and wife Catherine Eisenmann, and Paul A. Misch, Sr. Vice President of Houston Bank & Trust Co., Lic. holders known to me to be the persons whose names are subscribed to the foregoing instrument, and I am duly sworn, and as the act and deed of said corporation; and the same said Catherine Eisenmann having been examined by me, a Notary Public in and for Harris County, Texas, her husband and having the same fully explained to her by me, acknowledged said instrument to be her act and deed, and that she thereunto duly signed the same.

GIVEN UNDER MY HAND AND SEAL OF OFFICE, this 14th day of September, 1960.

*Walter M. Mischer*  
President  
in and for Harris County, Texas

This is to certify that I, Ralph C. Hilton, a registered Engineer of the State of Texas have plotted the above subdivision from an actual survey on the ground; and that all block, corner, angle points and points of curve are properly marked with iron pipes (3" pipe 3' long), and that this plot correctly represents that survey made by me.

*Ralph C. Hilton*  
Engineer  
Texas Registration No. 4095

This is to certify that the City Planning Commission of the City of Houston, Texas, has approved this plot and subdivision of Timber Oaks Section 3, as shown hereon.

IN TESTIMONY WHEREOF, witness the official signature of the Chairman and Secretary of the City Planning Commission of the City of Houston, Texas, this 1st day of November, 1960.

*Ralph S. Elliott*  
Secretary - Engineer

*Walter A. Misch*  
Vice Chairman

STATE OF TEXAS )  
(COUNTY OF HARRIS )

I, R. E. Turrentine, Jr., Clerk of the County Court of Harris County, Texas do hereby certify that the within instrument with its certificate of authentication was filed for registration in my office on 9/23, 1961, at 10:00 o'clock A. M. and duly recorded on 4/12, 1961, at 2:40 o'clock P. M. in Vol. 78, page 52, of record of Map for said County.

WITNESS my hand and seal of office, at Houston, the day and date last above written.

R. E. Turrentine, Jr. Clerk County Court  
Harris County, Texas

BY: *Paul A. Misch*  
THIS CERTIFICATE IS VALID ONLY AS TO THE INSTRUMENT AND THE ORIGINAL SIGNATURE IS FIXED AND ONLY THEN TO THE EXTENT THAT SUCH INSTRUMENT IS NOT ALTERED OR CHANGED AFTER RECORDING.

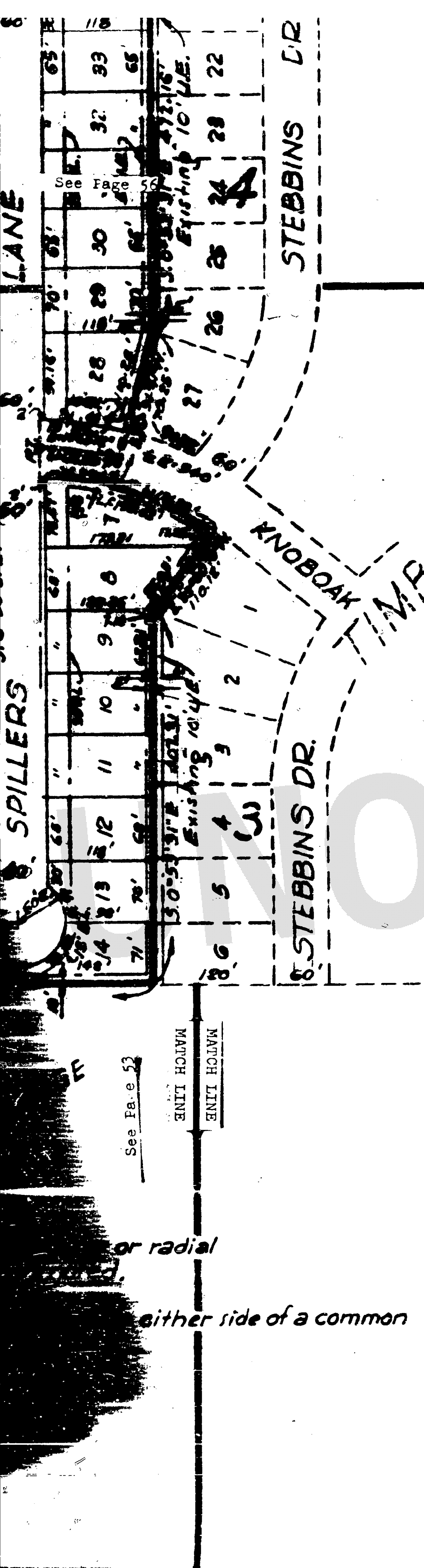
**TIMBER OAKS**

SEC. 3  
BEING A 17.23 ACRE TRACT OF LAND  
IN THE  
JOHN M. SWISHER SURVEY ABST. 1279  
HARRIS CO., TEXAS  
SCALE 1"=100' APRIL 22, 1960  
RALPH C. HILTON  
CONSULTING ENGINEER  
OWNER: SOUTHERN INVESTORS CONST. CO. INC.  
WALTER M. MISCHER-PRESIDENT  
705 HOLMES RD. HOUSTON TEX.  
2 BLOCKS 62 LOTS

MAP RECORDS OF  
HARRIS COUNTY, TEXAS  
VOL. 78 PAGE 54  
R.E. TURRENTINE, JR.  
COUNTY CLERK  
HARRIS COUNTY, TEXAS  
TIMBER OAKS Sec. 3  
This is 1 of 5 Pages







J. Ed Eisenmann, 117, and wife,  
Catherine Eisenmann  
*J. Ed Eisenmann*  
*Catherine Eisenmann*

Houston 1000 6 1 AMAZ, CO.  
BY: *Paul A. Misch*  
Vice President  
ATTEST:  
*William R. ...*  
Asst. Cashier

Walter Mischer  
President  
ATTEST:  
*Paul ...*  
Secretary

See Page 551

STATE OF TEXAS )  
(COUNTY OF HARRIS )

Before the undersigned authority, on this day personally appeared Walter M. Mischer, President, and Betty Lee Hillman, Secretary of Southern Investors Const. Co., Inc.; J. Ed Eisenmann, 117, and wife Catherine Eisenmann, and Paul A. Misch, Sr. Vice President of Houston Bank & Trust Co., all of whom being known to me to be the persons whose names are subscribed to the foregoing instrument, and I am duly sworn, and as the act and deed of said corporation; and the same said Catherine Eisenmann having been identified to me as the wife of her husband and having the same fully explained to her by me, acknowledged said instrument to be her act and deed, and that she thereunto duly signed the same.

GIVEN UNDER MY HAND AND SEAL OF OFFICE, this 19th day of September, 1960.

*Walter Mischer*  
President  
in and for Houston, Texas

This is to certify that I, Ralph C. Hilton, a registered Engineer of the State of Texas have plotted the above subdivision from an actual survey on the ground; and that all block, corner, angle points and points of curve are properly marked with iron pipes (3" pipe 3' long), and that this plot correctly represents that survey made by me.

*Ralph C. Hilton*  
Engineer  
Texas Registration No. 4095

This is to certify that the City Planning Commission of the City of Houston, Texas, has approved this plot and subdivision of Timber Oaks Section 3, as shown hereon.

IN TESTIMONY WHEREOF, witness the official signature of the Chairman and Secretary of the City Planning Commission of the City of Houston, Texas, this 1st day of November, 1960.

*Ralph S. Elliott*  
Secretary - Engineer

*Walter A. Misch*  
Vice Chairman

STATE OF TEXAS )  
(COUNTY OF HARRIS )

I, R. E. Turrentine, Jr., Clerk of the County Court of Harris County, Texas do hereby certify that the within instrument with its certificate of authentication was filed for registration in my office on 9/23/60, at 10:00 o'clock, A.M. and duly recorded on 4/12, 1961, at 2:40 O'clock, P.M. in Vol. 178, page 52, of record of Map for said County.

WITNESS my hand and seal of office, at Houston, the day and date last above written.

R. E. Turrentine, Jr. Clerk County Court  
Harris County, Texas

BY: *Paul ...*  
THIS CERTIFICATE IS VALID ONLY AS TO THE INSTRUMENT AND THE ORIGINAL SIGNATURE IS AFFIXED AND ONLY THEN TO THE EXTENT THAT SUCH INSTRUMENT IS NOT ALTERED OR CHANGED AFTER RECORDING.

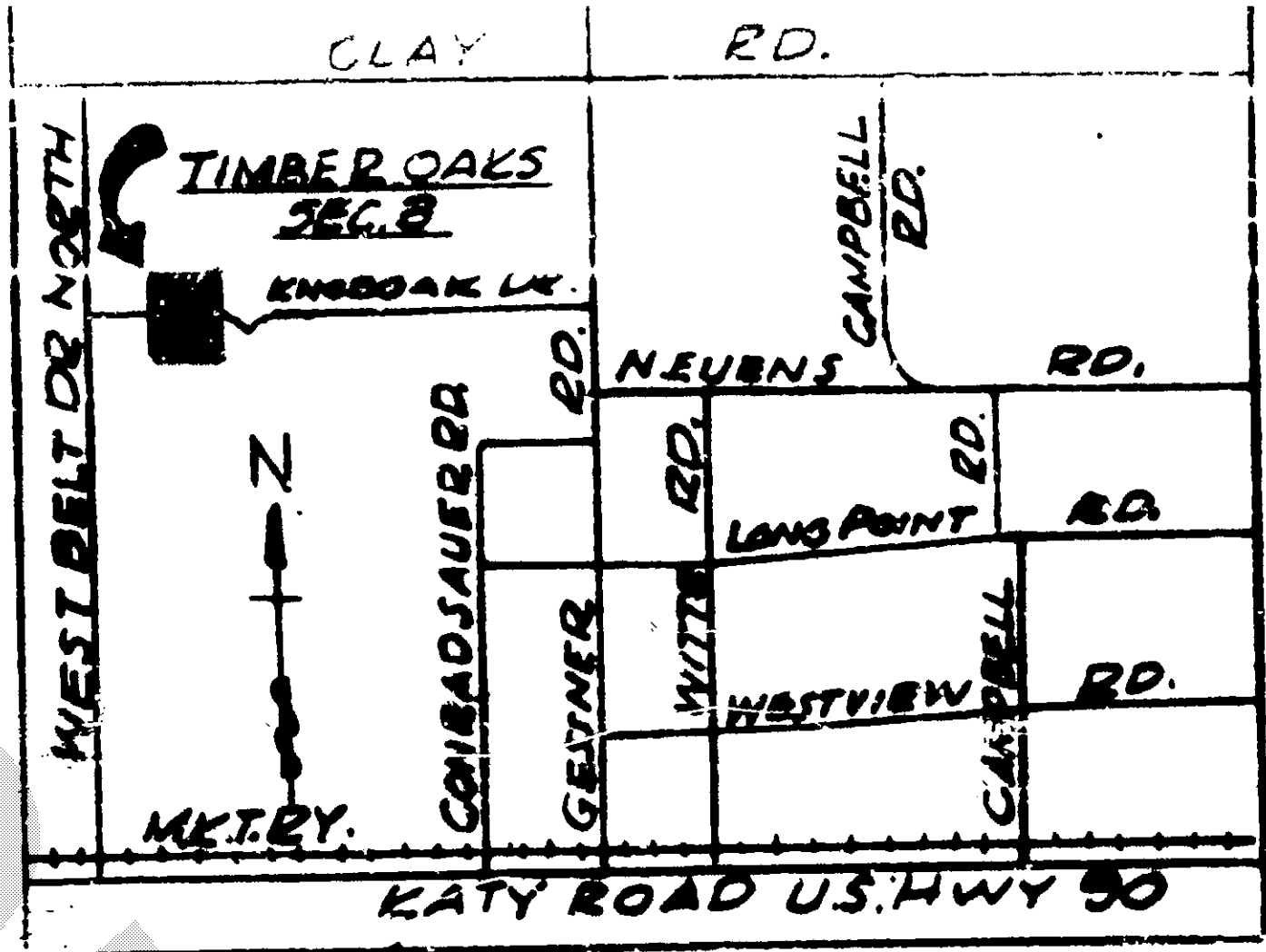
**TIMBER OAKS**

SEC. 3  
BEING A 17.23 ACRE TRACT OF LAND  
IN THE  
JOHN M. SWISHER SURVEY ABST. 1279  
HARRIS CO., TEXAS  
SCALE 1"=100' APRIL 22, 1960  
RALPH C. HILTON  
CONSULTING ENGINEER  
OWNER: SOUTHERN INVESTORS CONST. CO. INC.  
WALTER M. MISCHER-PRESIDENT  
705 HOLMES RD. HOUSTON TEX.  
2 BLOCKS 62 LOTS

MAP RECORDS OF  
HARRIS COUNTY, TEXAS  
VOL. 78 PAGE 54  
R.E. TURRENTINE, JR.  
COUNTY CLERK  
HARRIS COUNTY, TEXAS  
TIMBER OAKS Sec. 3  
This is 1 of 5 Pages





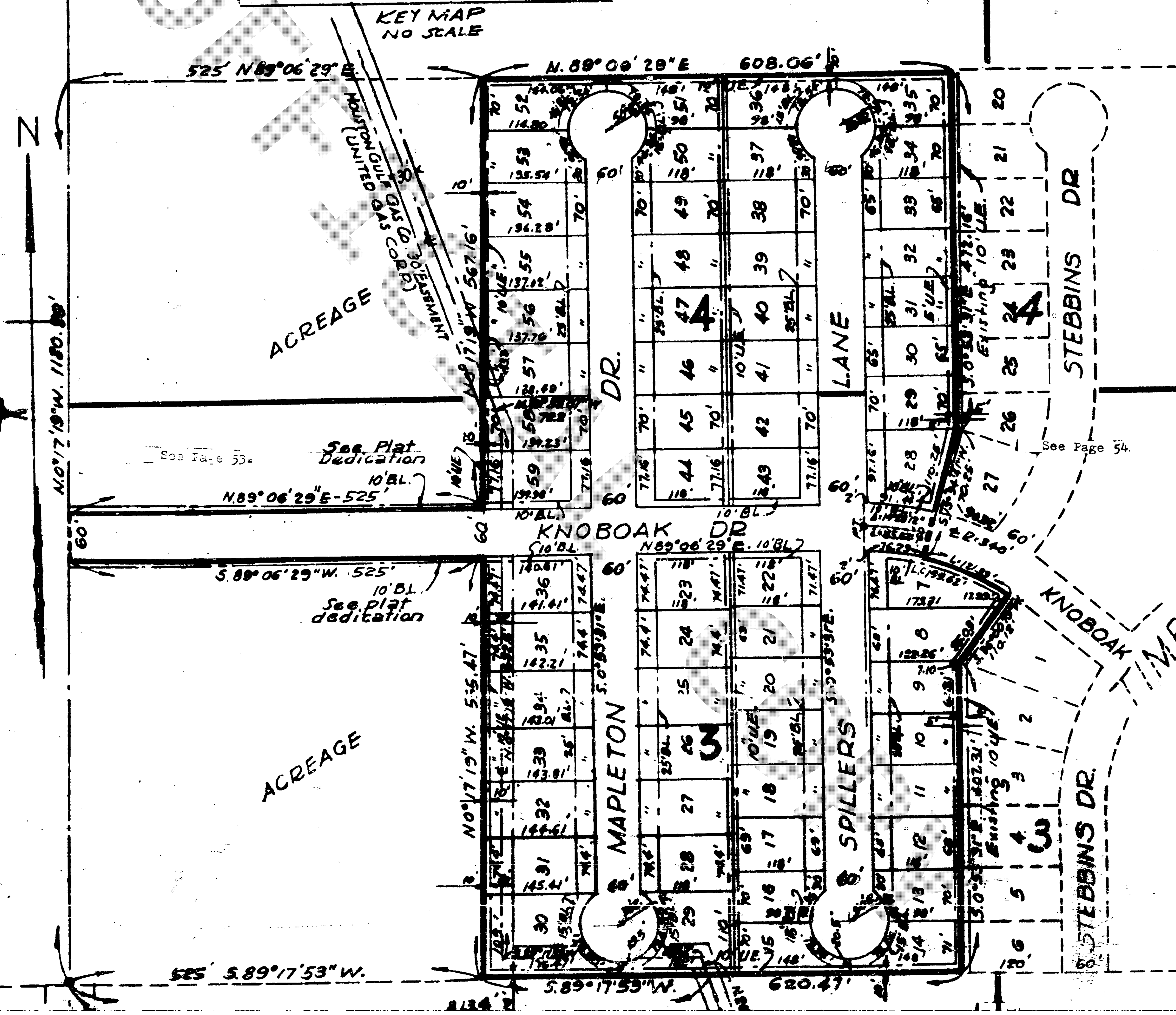


MAP RECORDS OF  
 HARRIS COUNTY TEXAS  
 VOL. 78 PAGE 55  
 R.E. TURRENTINE, JR.  
 COUNTY CLERK  
 HARRIS COUNTY, TEXAS  
 TIMBER OAKS Sec. 3  
 This is 1 of 5 Pages.

ACREAGE

MATCH LINE  
 MATCH LINE

See Page 56







MAP RECORDS OF  
HARRIS COUNTY, TEXAS  
VOL. 78 PAGE 561  
R. E. TURRENTINE, JR.  
COUNTY CLERK  
HARRIS COUNTY, TEXAS  
TIMBER OAKS Sec. 3  
This is 1 of 5 Pages

STATE OF TEXAS  
(COUNTY OF HARRIS)

We, Walter M. Mischen and Betty Lou Hillman President and Secretary respectively of Southern Investors Construction Co., Inc. owner of the property subdivided in the above and foregoing map of Timber Oaks Sec. 3, do hereby make subdivision of said property for and on behalf of said Southern Investors Construction Co., Inc. according to the lines, lots, building lines, streets, alleys, paths and easements thereon shown and designate said subdivision as Timber Oaks Sec. 3, located in the J. M. Salcher Survey in Harris County, Texas, and on behalf of said Southern Investors Construction Co., Inc. dedicate to the public use, as such, all of the streets, alleys, paths and easements shown thereon forever and do hereby waive any claims for damages occasioned by the establishing of grades as approved for the streets and alleys dedicated or occasioned by the alteration of the grades and do hereby bind ourselves, our successors and assigns to warrant and forever defend the title to the land so dedicated.

We, J. Ed. Eisemann, 111, and wife Catherine Eisemann, and Houston Bank & Trust Co., owners and holders of liens upon said property do hereby ratify and confirm said subdivision and dedication, and do hereby in all things subordinate to said subdivision and dedication the liens against said land owned and held by us.

There is also dedicated for utilities an unobstructed aerial easement five (5) feet wide from a plane twenty (20) feet above the ground upward, located adjacent to all easements shown hereon.

We hereby covenant and agree that all lots within the boundaries of this subdivision are for residential purposes unless otherwise noted.

We hereby covenant and agree with the City of Houston and/or Harris County that building lines shown on acreage are hereby established as shown.

IN TESTIMONY WHEREOF, Southern Investors Construction Co., Inc. has caused these presents to be signed by Walter M. Mischen, its President, thereunto authorized, attested by its secretary, Betty Lou Hillman, and its common seal hereunto affixed this 19th day of September 1960.

LIEN HOLDERS

J. Ed. Eisemann, 111, and wife,  
Catherine Eisemann

*J. Ed. Eisemann, III*  
*Catherine Eisemann*

Houston Bank & Trust Co.

BY: *Paul A. Rony*  
Vice President  
ATTEST:  
*William K. ...*  
Asst. Cashier

Southern Investors Construction Co., Inc.

BY: *Walter M. Mischen*  
President  
ATTEST:  
*Betty Lou Hillman*  
Secretary

STATE OF TEXAS  
(COUNTY OF HARRIS)

Before the undersigned authority, on this day personally appeared Walter M. Mischen, President and Betty Lou Hillman, Secretary of Southern Investors Construction Co., Inc.; J. Ed. Eisemann, 111, and wife Catherine Eisemann, and Paul A. Rony, Vice President of Houston Bank & Trust Co., lien holders; known to me to be the persons whose names are subscribed to the foregoing instrument, and acknowledged to me that they executed the same for the purposes and consideration therein expressed, and in the capacity therein and herein set out, and as the act and deed of said corporation; and the same said Catherine Eisemann having been examined by me privately and apart from her husband and having the same fully explained to her by me, acknowledged said instrument to be her act and deed, and that she had willingly signed the same.

Given under my hand and seal of office, this 19th day of September 1960.

*Walter M. Mischen*  
Notary Public  
in and for Harris County, Texas

This is to certify that J. Ralph C. Hilton, a registered Engineer of the State of Texas have plotted the above subdivision from an actual survey on the ground; and that all block corners, angle points and points of curve are properly marked with iron pipes (1" x 3" pipe 3' long), and that this plat correctly represents that survey made by me.

*Ralph C. Hilton*  
Engineer  
Texas Registration No. 4696

This is to certify that the City Planning Commission of the City of Houston, Texas, has approved this plat and subdivision of Timber Oaks, Section 3, as shown hereon.

IN TESTIMONY WHEREOF, witness the official signature of the Chairman and Secretary of the City Planning Commission of the City of Houston, Texas, this 1st day of November, 1960.

*Ralph S. Ellifant*  
Secretary - Engineer

*Walter P. Whitely*  
Vice Chairman

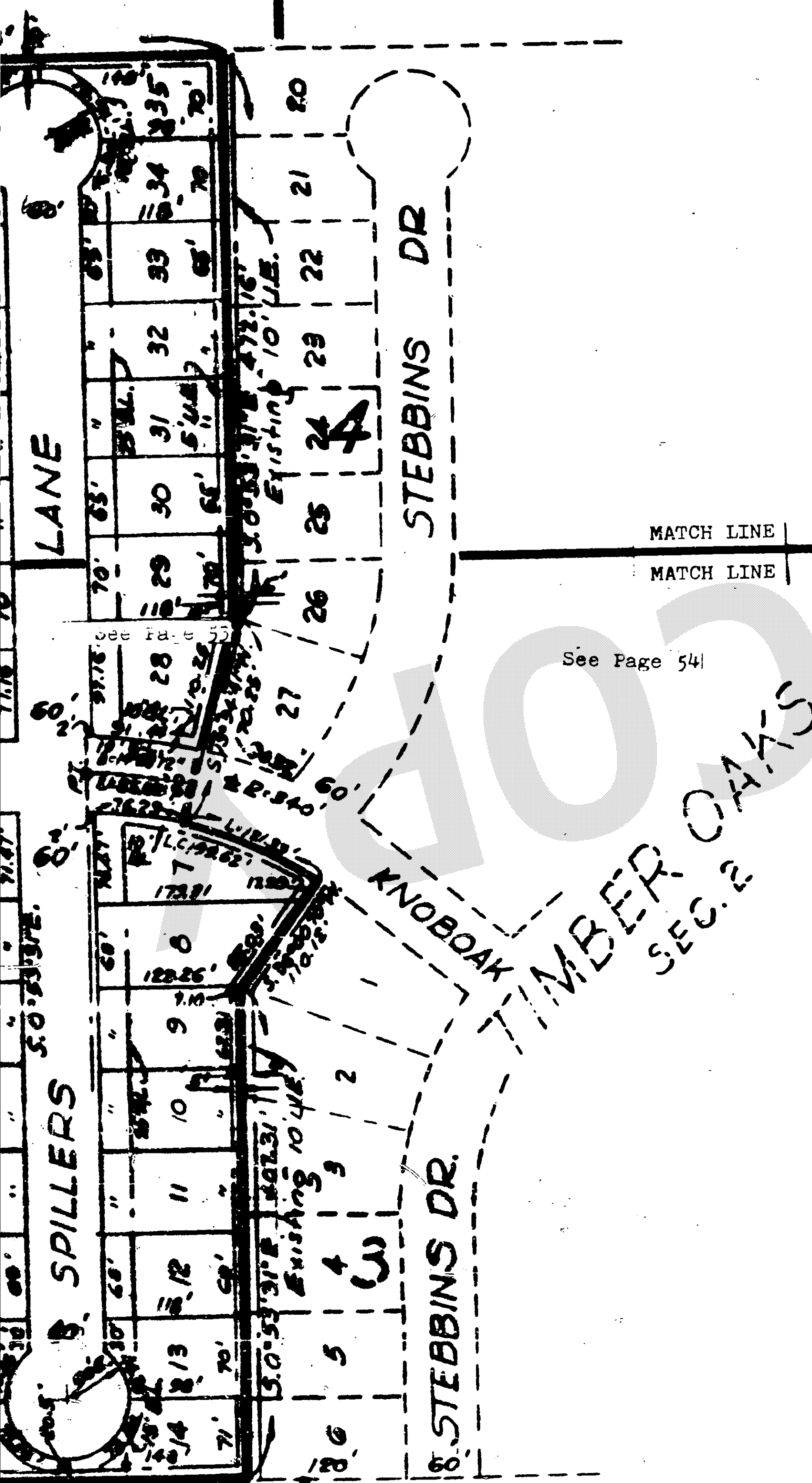
STATE OF TEXAS  
(COUNTY OF HARRIS)

I, R. E. Turrentine, Jr., Clerk of the County Court of Harris County, Texas do hereby certify that the within instrument with its certificate of authentication was filed for registration in my office on 9/23/1961, at 10:00 o'clock A.M. and duly recorded on 4/12/1961, at 9:40 o'clock P.M. in Vol. 78, page 52, of record of Harris County.

WITNESS my hand and seal of office, at Houston, the day and date last above written.

R. E. Turrentine, Jr. Clerk County Court  
Harris County, Texas

THIS CERTIFICATE IS VALID ONLY AS TO THE ORIGINAL SIGNATURE



See Page 551

See Page 541



MAP RECORDS OF  
HARRIS COUNTY, TEXAS  
VOL. 78 PAGE 561  
R. E. TURRENTINE, JR.  
COUNTY CLERK  
HARRIS COUNTY, TEXAS  
TIMBER OAKS Sec. 3  
This is 1 of 5 Pages

STATE OF TEXAS )  
(COUNTY OF HARRIS)

We, Walter M. Mischer and Betty Lou Hillman President and Secretary respectively of Southern Investors Construction Co., Inc. owner of the property subdivided in the above and foregoing map of Timber Oaks Sec. 3, do hereby make subdivision of said property for and on behalf of said Southern Investors Construction Co., Inc. according to the lines, lots, building lines, streets, alleys, paths and easements thereon shown and designate said subdivision as Timber Oaks Sec. 3, located in the J. M. Salcher Survey in Harris County, Texas, and on behalf of said Southern Investors Construction Co., Inc. dedicate to the public use, as such, all of the streets, alleys, paths and easements shown thereon forever and do hereby waive any claims for damages occasioned by the establishing of grades as approved for the streets and alleys dedicated or occasioned by the alteration of the grades and do hereby bind ourselves, our successors and assigns to warrant and forever defend the title to the land so dedicated.

We, J. Ed. Eisemann, 111, and wife Catherine Eisemann, and Houston Bank & Trust Co., owners and holders of liens upon said property do hereby ratify and confirm said subdivision and dedication, and do hereby in all things subordinate to said subdivision and dedication the liens against said land owned and held by us.

There is also dedicated for utilities an unobstructed aerial easement five (5) feet wide from a plane twenty (20) feet above the ground upward, located adjacent to all easements shown hereon.

We hereby covenant and agree that all lots within the boundaries of this subdivision are for residential purposes unless otherwise noted.

We hereby covenant and agree with the City of Houston and/or Harris County that building lines shown on acreage are hereby established as shown.

IN TESTIMONY WHEREOF, Southern Investors Construction Co., Inc. has caused these presents to be signed by Walter M. Mischer, its President, thereunto authorized, attested by its secretary, Betty Lou Hillman, and its common seal hereunto affixed this 19th day of September 1960.

LOAN HOLDERS

J. Ed. Eisemann, 111, and wife,  
Catherine Eisemann

*J. Ed. Eisemann, III*  
*Catherine Eisemann*

Houston Bank & Trust Co.

BY: *Paul A. Rony*  
Vice President  
ATTEST:  
*William K. ...*  
Asst. Cashier

Southern Investors Construction Co., Inc.

BY: *Walter M. Mischer*  
President  
ATTEST:  
*Betty Lou Hillman*  
Secretary

STATE OF TEXAS )  
(COUNTY OF HARRIS)

Before the undersigned authority, on this day personally appeared Walter M. Mischer, President and Betty Lou Hillman, Secretary of Southern Investors Construction Co., Inc.; J. Ed. Eisemann, 111, and wife Catherine Eisemann, and Paul A. Rony, Sr. Vice President of Houston Bank & Trust Co., lien holders; known to me to be the persons whose names are subscribed to the foregoing instrument, and acknowledged to me that they executed the same for the purposes and consideration therein expressed, and in the capacity therein and herein set out, and as the act and deed of said corporation; and the same said Catherine Eisemann having been examined by me privately and apart from her husband and having the same fully explained to her by me, acknowledged said instrument to be her act and deed, and that she had willingly signed the same.

WITNESSED UNDER MY HAND AND SEAL OF OFFICE, this 19th day of September 1960.

*Walter M. Mischer*  
Notary Public  
in and for Harris County, Texas

This is to certify that J. Ralph C. Hilton, a registered Engineer of the State of Texas have plotted the above subdivision from an actual survey on the ground; and that all block corners, angle points and points of curve are properly marked with iron pipes (1" x 3" pipe 3' long), and that this plat correctly represents that survey made by me.

*Ralph C. Hilton*  
Engineer  
Texas Registration No. 4696

This is to certify that the City Planning Commission of the City of Houston, Texas, has approved this plat and subdivision of Timber Oaks, Section 3, as shown hereon.

IN TESTIMONY WHEREOF, witness the official signature of the Chairman and Secretary of the City Planning Commission of the City of Houston, Texas, this 1st day of November, 1960.

*Ralph S. Ellifant*  
Secretary - Engineer

*Walter P. Whitely*  
Vice Chairman

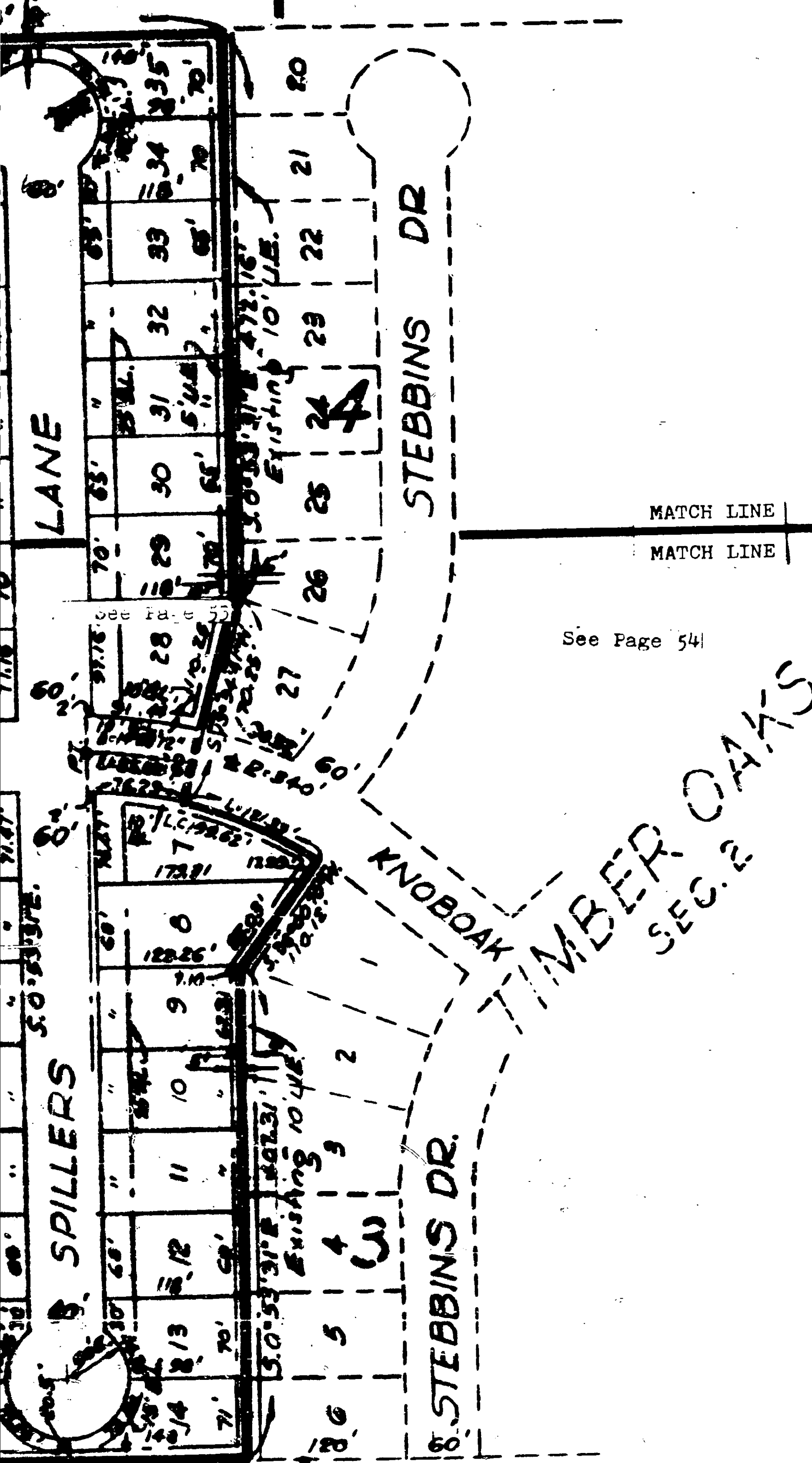
STATE OF TEXAS )  
(COUNTY OF HARRIS)

J. R. E. Turrentine, Jr., Clerk of the County Court of Harris County, Texas do hereby certify that the within instrument with its certificate of authentication was filed for registration in my office on 9/23/1961, at 10:00 o'clock A.M. and duly recorded on 4/12/1961, at 9:40 o'clock P.M. in Vol. 78, page 52, of record of Harris County.

WITNESS my hand and seal of office, at Houston, the day and date last above written.

R. E. Turrentine, Jr. Clerk County Court  
Harris County, Texas

IN THIS CERTIFICATE IS VALID ONLY AS TO THE ORIGINAL SIGNATURE



See Page 551

See Page 541